

# Signal Herpetoculture

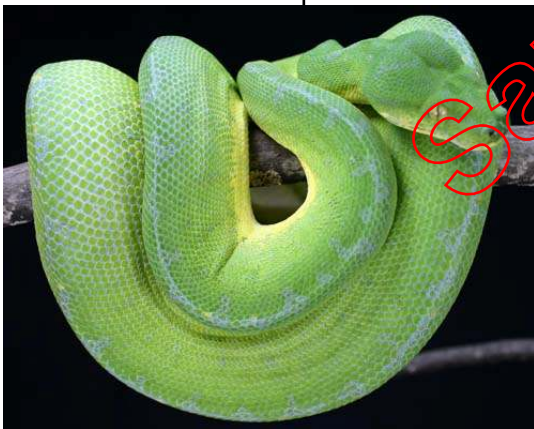
## 08152—08163 Pedigree



Dam ID# EA9604  
Origin: Imported 1995



Sire ID# 96004  
Origin: Imported 1996



Female ID# 01023 Hatched 2 May 2001.  
Artificial Incubation, all yellow.



Male ID# 03062  
Farm bred Manokwari type.

08152—08163 Hatched 12 August 2008.  
Artificial incubation. All yellow neonates.

Signal Herpetoculture, Rico Walder  
P.O. Box 204, Signal Mtn., TN 37377  
Phone: 423.886.3029 rico@signalherp.com www.signalherp.com