

Signal Herpetoculture

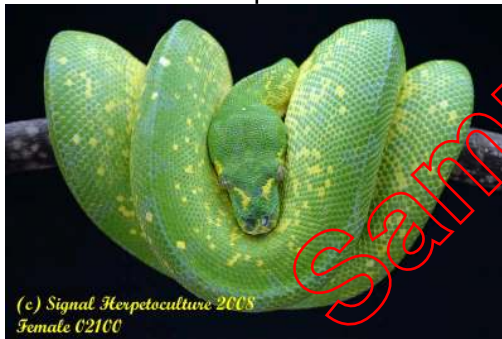
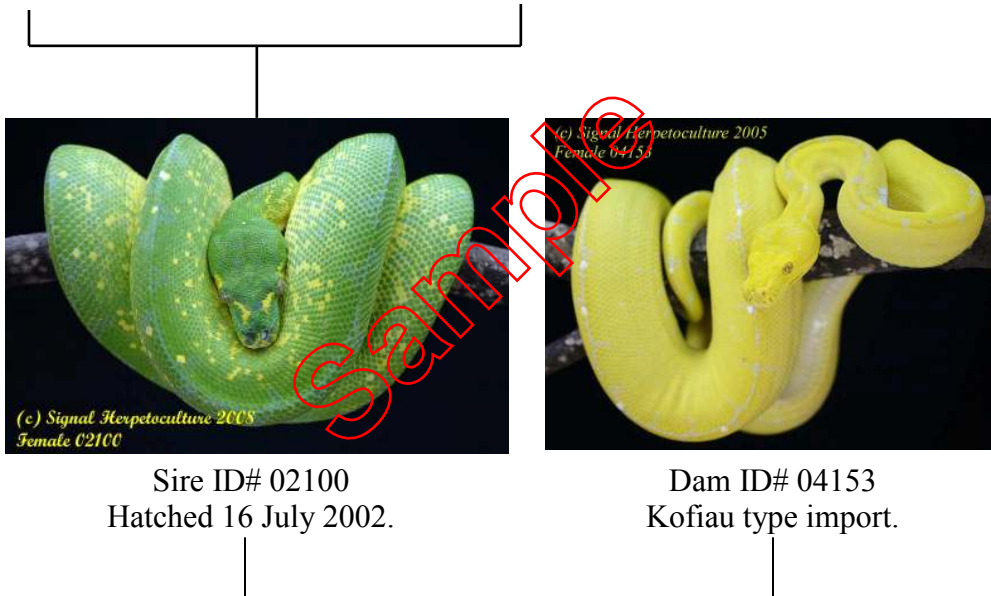
09075 - 09088 Pedigree



Dam ID# EA9604
Sorong, Imported 1995



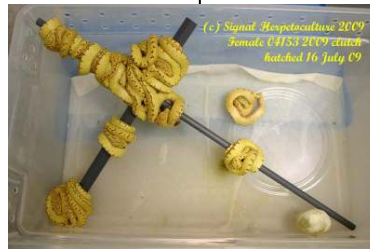
Sire ID# 99151
Biak Import



Sire ID# 02100
Hatched 16 July 2002.



Dam ID# 04153
Kofiau type import.



09075 — 09088 Hatched 16 July 2009
Artificial incubation, all yellow neonates.

Signal Herpetoculture, Rico Walder
P.O. Box 204, Signal Mtn., TN 37377
Phone: 423.886.3029 www.signalherp.com